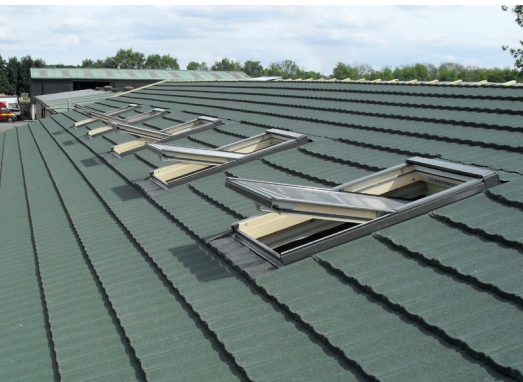


THIS DUTCH PANTILE EFFECT PROFILE IS A FIRST CHOICE FOR LEISURE BUILDINGS



- ✓ Educational buildings
- ✓ Commercial buildings
- ✓ Flat to pitch
- ✓ Community centres
- ✓ Vertical cladding
- ✓ Holiday homes
- ✓ Park homes
- ✓ Camping pods
- ✓ Stables
- ✓ Conservatories
- ✓ Lean to's
- ✓ Garages



THIS DUTCH PANTILE EFFECT PROFILE IS A FIRST CHOICE FOR LEISURE BUILDINGS

ADVANTAGES

- British made
- Designed to give a traditional tile appearance
- Lightweight
- Low pitch
- Good vandal resistance (0.9mm steel base)
- Quick installation
- Cost effective
- Virtually maintenance free
- Extensive range of accessories and flashings available
- Fully dry-fixed
- 50-year warranty
- Full technical support available

TECHNICAL DATA

- Min. pitch: 10 °
- Max. pitch: 90°
- Overall width: 1308mm
- Cover width: 1248mm
- Side lap: 60mm
- Step: 22mm
- Batten gauge (0.45mm): 370mm
- Batten gauge (0.9mm): 368mm
- Individual tile width: 156mm
- Roof cover per tile panel: 0.46m²
- Tile panels per m²: 2.18
- Steel base: 0.45mm & 0.9mm
- Weight as laid per m²: 7kg & 11kg
- Fire Resistance: AA classification equal

COLOURS AVAILABLE



Titanium Grey

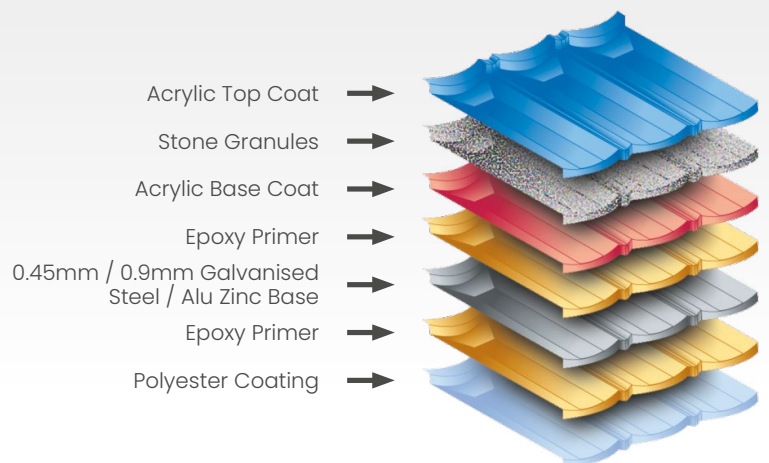
Bramble Brown

Rustic Brown



Rustic Terracotta

Tartan Green



Kingfisher House, Unit 17, Overthorpe Road, Banbury OX16 4SX
T +44 (0) 1295 250998 F +44 (0) 1295 271068 E sales@britmet.co.uk

www.britmet.co.uk

APPROVALS:

- British Board of Agrément 02/3917
- Manufactured using ISO 9001 approved materials
- ISO 14001