

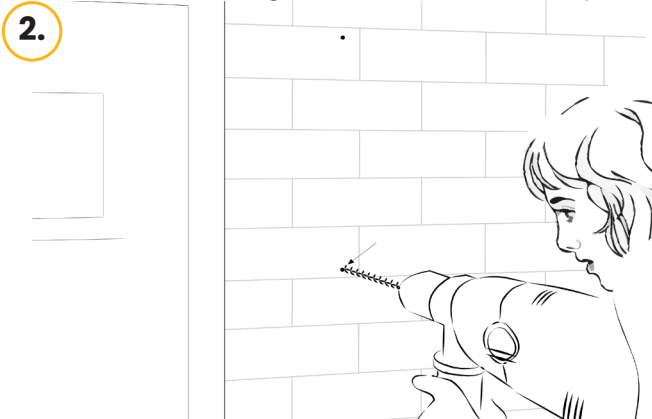
Please note: These instructions are guidelines only and will not include all of the appropriate equipment that is necessary to be used in accordance with safety regulations.



### 1. Mark your placements

Mark a vertical line using a spirit level 520mm from the centre of the door. Hold a gallow bracket against the wall to the required height (usually above the top of the door frame) so that the inner edge is on the line drawn.

Mark the bottom gallow bracket hole position.



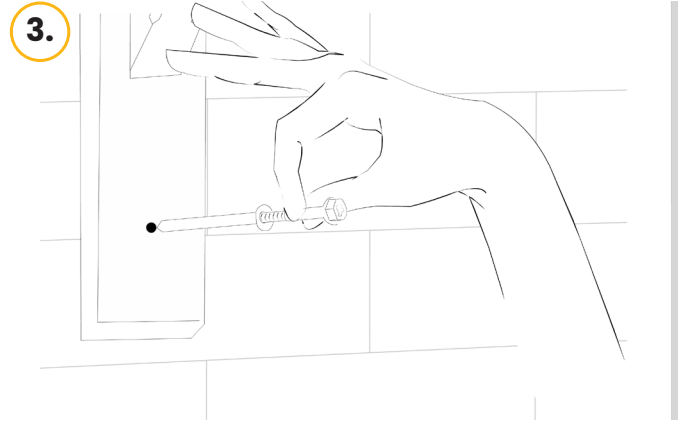
Remove the bracket and drill a hole at 10mm diameter and 50mm deep.

### 2. Fix the bracket to the wall

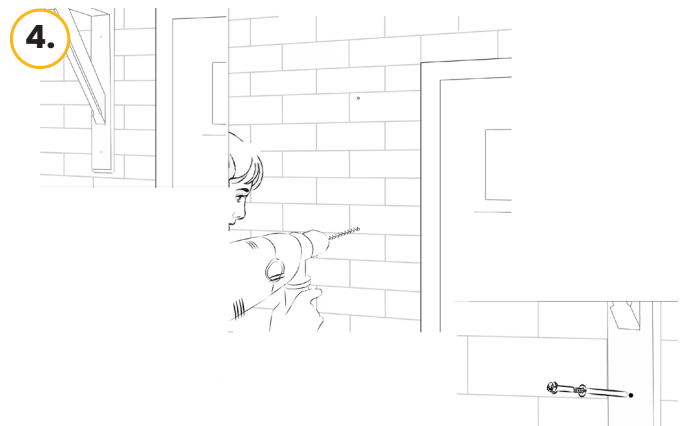
Hold the bracket back in place and knock in the plug, and screw bracket into the drilled hole. Only tighten partially.

Using a spirit level again, ensure the bracket is vertical and mark the top loop hole.

Move the bracket to one side and drill the top hole at 10mm diameter and 80mm deep.



3. Then, reposition the bracket and knock in the plug and screw into place. Be sure to tighten both screws.



### 4. Repeat

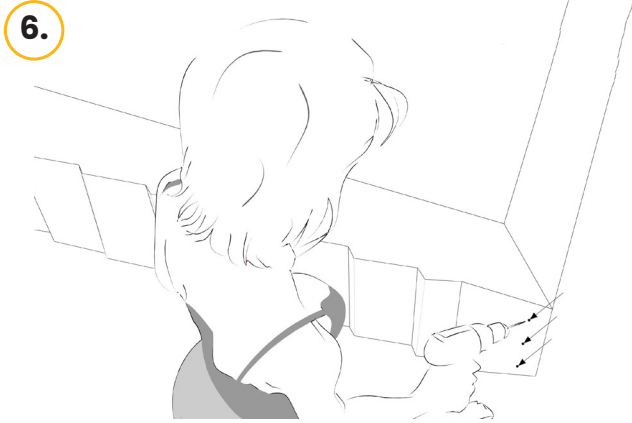
Mark, drill and position the second bracket as per the previous instructions.



### 5. Mark your vertical line

Mark a vertical line on the wall on the other side of the door 1040mm from the inner edge of the fixed.

Using a spirit level, position the second bracket, ensuring it is vertically straight and level with the other bracket.



### Screw the canopy together

Place the two halves of the canopy together on the floor, ensuring they line up correctly and insert the 3 screws to hold the top edge of the canopy together.

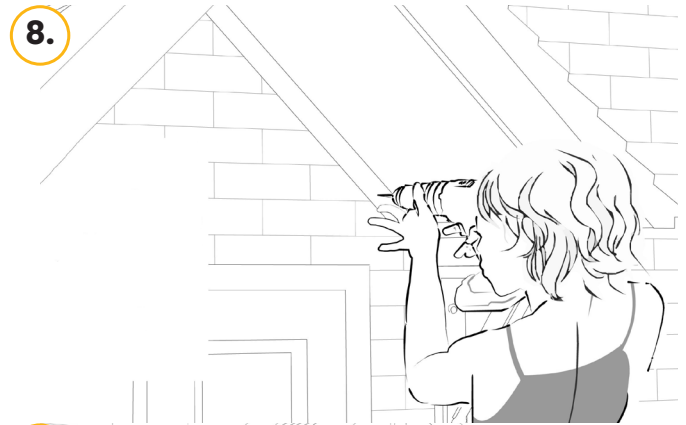
### Attach the canopy profile

Using two people, carefully lift the canopy on to the two fixed brackets to check everything is aligned. Insert two screws through the front edge of the gallows bracket into the front of the canopy profile.



### Fasten canopy to the wall

Drill two holes through the back face of the canopy into the wall at a 10mm diameter and 80mm deep. Be aware to place the holes in an appropriate position, avoiding mortar lines. Insert two screws through the canopy into the wall and tighten.



Insert the truss into the front of the canopy and fix it in place. If required, fit the ridge tiles at the peak of the apex.

